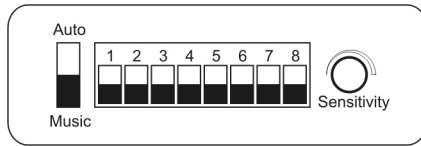


RGB LED PAR User Guide

1. Auto Change Mode

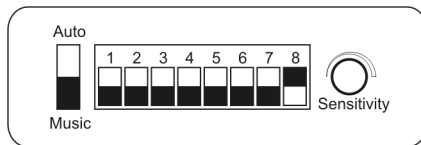


Set all the dip switches to OFF.

For music control set the switch to “Music”.

For potentiometer control set the switch to “Auto”.

2. Auto Fade Mode



Set dip switch 8 to ON.

The fade time may be select by set the dip switches to ON:

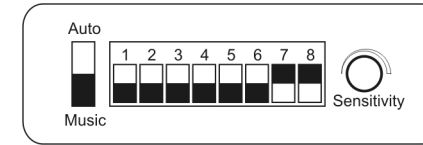
DIP 1	DIP 2	DIP 3	DIP 4	DIP 5	DIP 6
2.5s	5s	10s	20s	40s	80s

If dipswitch 1 to 6 is set to OFF the fade time for one pattern is 10:30min.

The related time of dip switch 1 to 6 can be added:

Dip switch 1 and 2 to ON, fade time = 2,5s + 5s = 7,5s

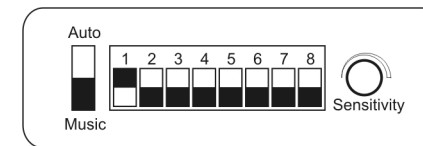
3. Manual Mode



Set dip switch 7 and 8 to ON.

RED	DIP 1,2	OFF/ OFF	ON/OFF	OFF/ON	ON/ON
GREEN	DIP 3,4				
BLUE	DIP 5,6				
Brightness		0	25%	50%	100%

4. DMX Mode



Set dip switch 8 to OFF and at least one of dipswitch 1 to 7 to ON.

The channel usage is according to this table:

CH-1	CH-2	CH-3	CH-4	CH-5
MODE	RED	GREEN	BLUE	Speed
0 - 63 = RGB Control	0 - 255 = DIM	0 - 255 = DIM	0 - 255 = DIM	NA
64 - 127 = 7 color fade	NA	NA	NA	11 - 100 = fast speed to low speed
128 - 191 = 7 color change				151 - 255 = speed control by unit, by music or Potentiometer
192 - 255 = 3 color change				

The DMX channels may be set by dipswitches 1 to 7, in the range of DMX channel 1 to 123. Dipswitch 1 is first channel. The channels may be added:

DIP 1	DIP 2	DIP 3	DIP 4	DIP 5	DIP 6	DIP 7
1ch	2ch	4ch	8ch	16ch	32ch	64ch